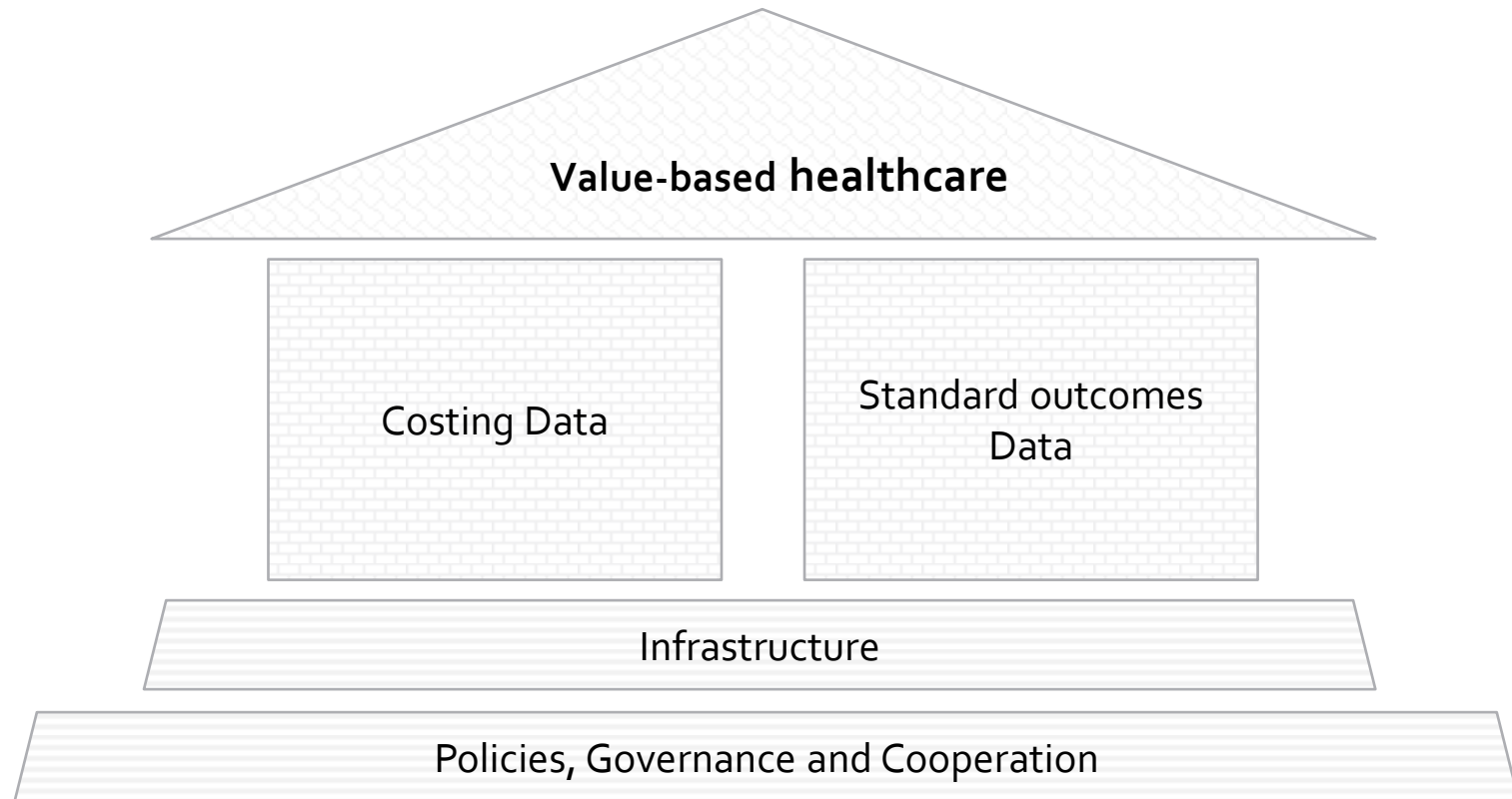




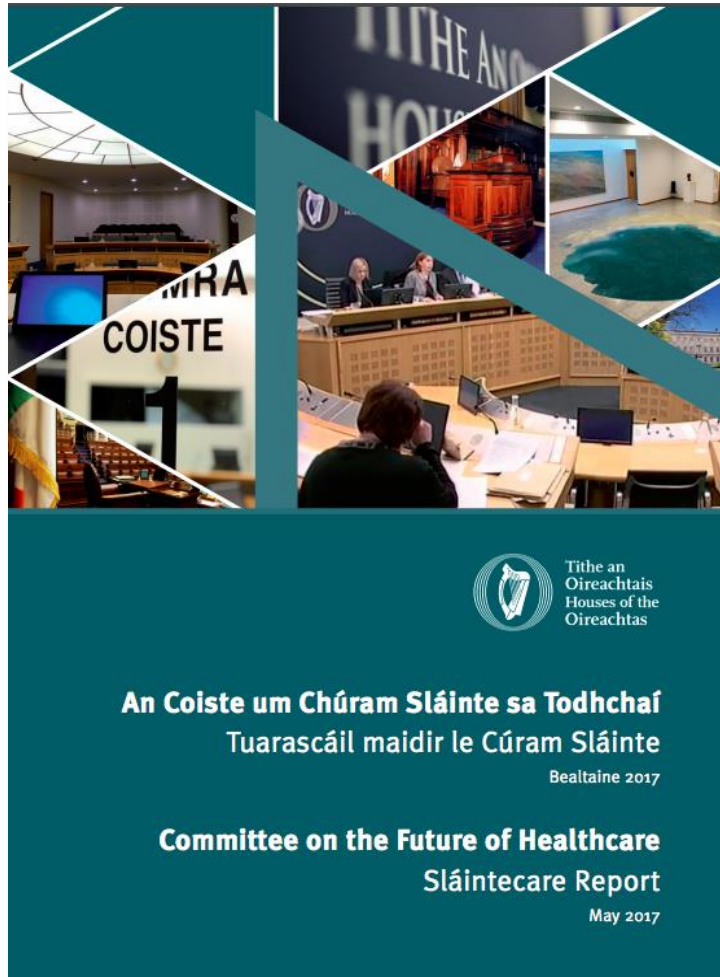
IMSTA Annual Conference
Dublin
11th April 2018

Building blocks required for value-based healthcare



Accountability through value-based healthcare can only be achieved if the foundations are in place

Value-based healthcare is a tool for implementing Sláintecare



Sláintecare provides the foundation
for national healthcare reform

How do we maximise this
opportunity?

The national value-based healthcare implementation pilot in the U.S.

ICHOM is working with U.S. stakeholders at the national level in order to achieve the following:

1

Measure outcomes consistently and in a standardised form

2

Enable community members to benchmark their performance with one another

3

Demonstrate capacity to collect and use PROs in both clinical and community settings

4

Support the community in utilizing cost and outcomes data to improve the efficiency and efficacy of their services

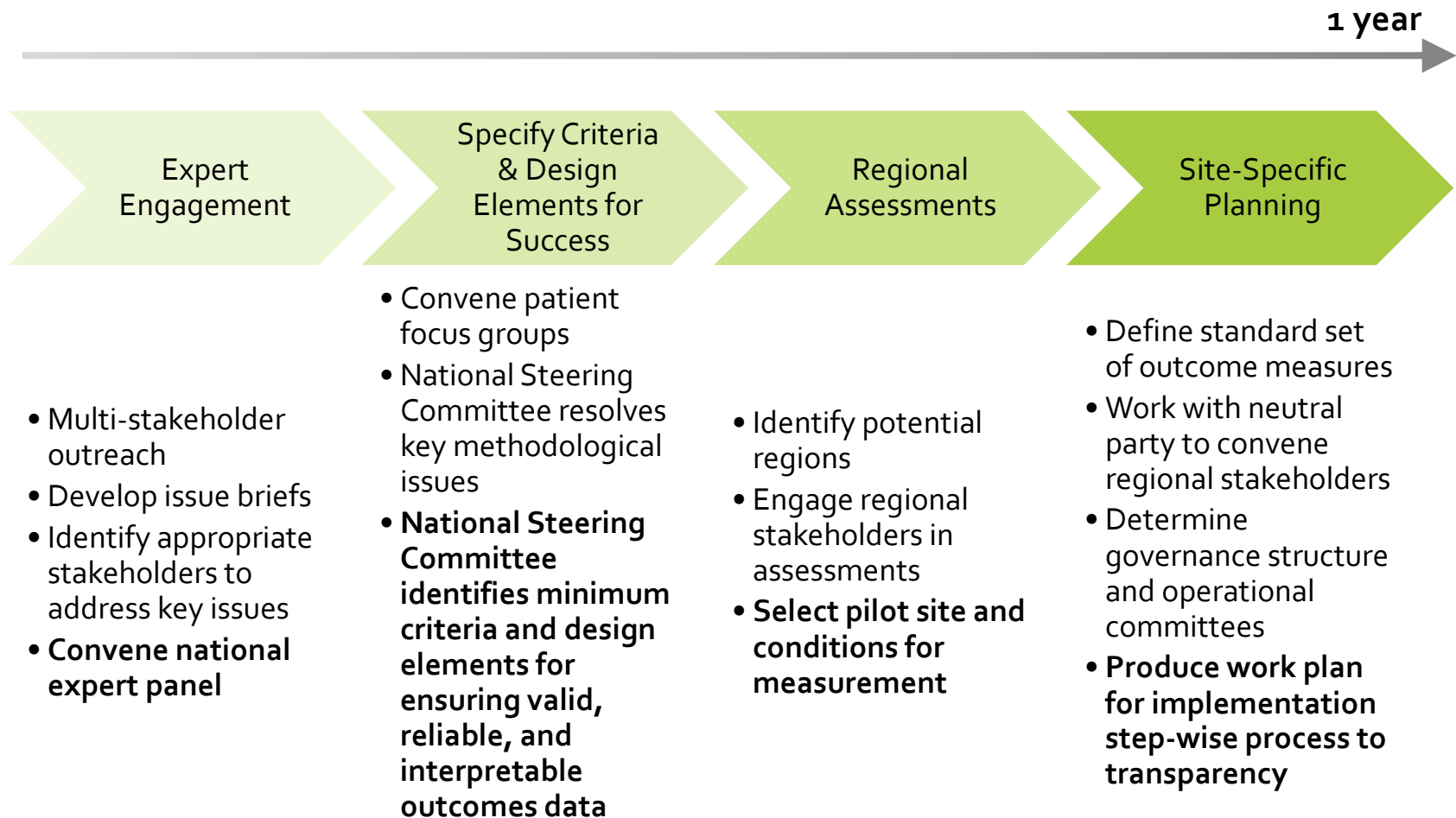
5

Engage community in next steps towards value-based purchasing and consumer decision-making based on outcomes

6

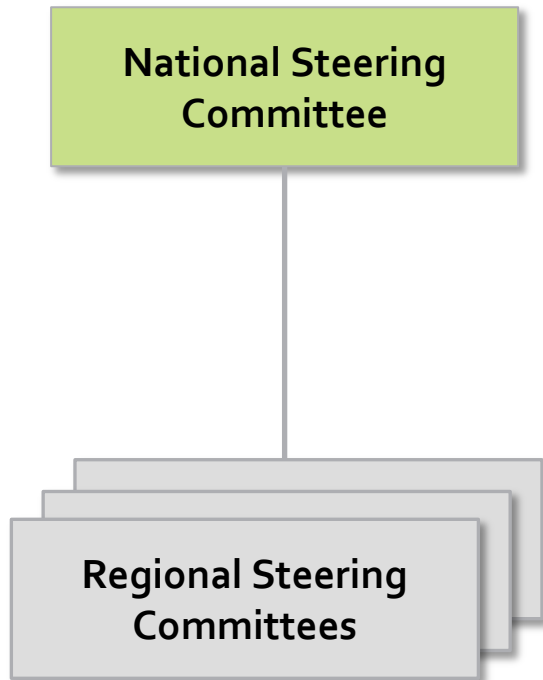
To engage industry and policymakers in the learning from the program

We took a phased approach to the planning activities

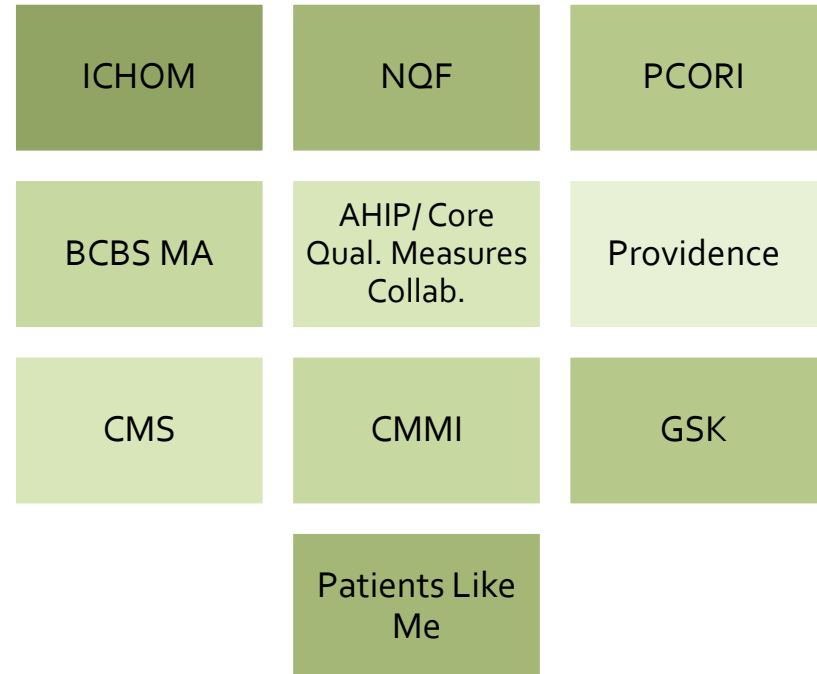


The governance structure balances national with regional oversight

Governance Structure

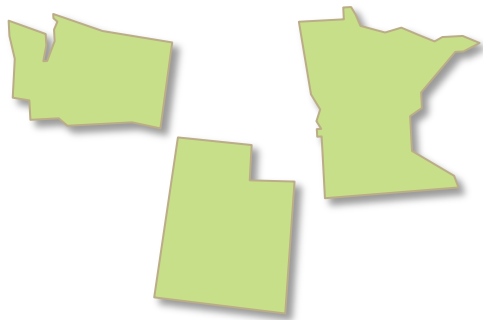


U.S. Steering Committee



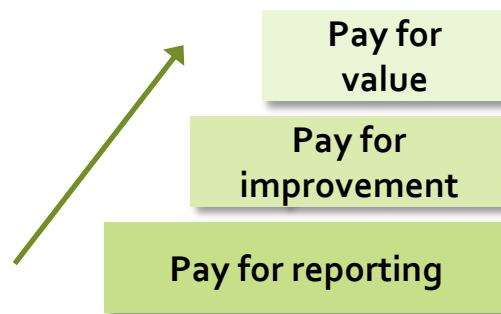
We are taking a 3-phased approach

Select 2-3 regions and 1-2 candidate conditions



- Engage key stakeholders from public and private organisations
- Build infrastructure and other requirements

Drive step-wise approach to accountability



- Drive stage-gate method for ramping up accountability
- Design incentive structure

Evaluate impact



- Assess population-level impact
- Assess health system impact

ICHOM Challenge

The successful implementation of Sláintecare requires accountability.

Value-based healthcare principles are a tool for accountability.

How do we bring together the relevant stakeholders to implement Sláintecare using value-based healthcare principles?